

Sock Knitters Anonymous

May 2010 Mystery Sock Clue #2

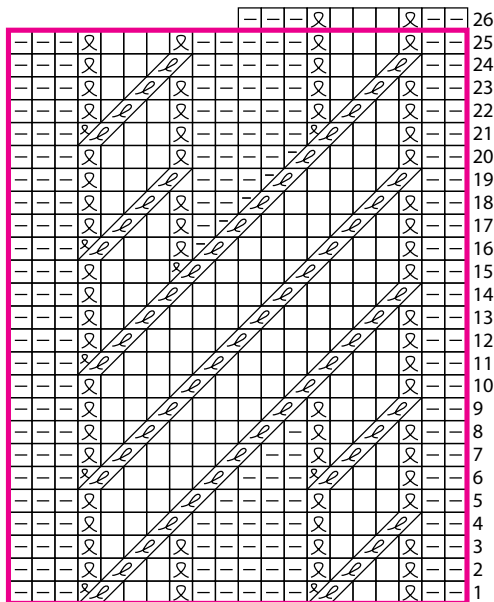
by

Leg - Cable Pattern

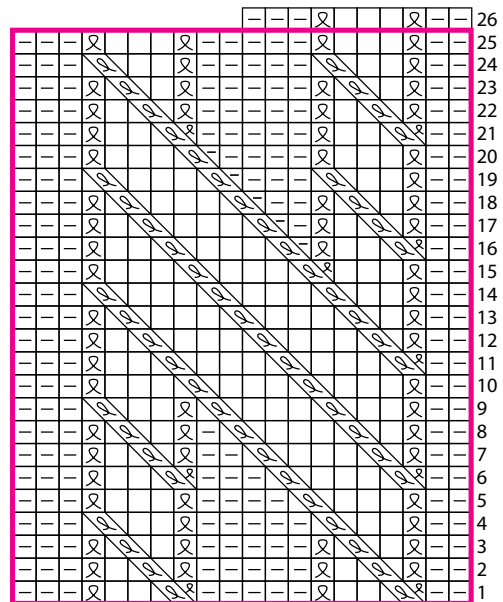
Work Cable Pattern chart. Shift beginning of round 10 stitches to the left on Row 26 as follows: Work stitches from chart, mark new beginning of round.

Work rows 1-26 of Cable Pattern chart twice more. To shorten leg of sock, work fewer vertical repeats.

Cable Pattern - Left Sock
20 stitches



Cable Pattern - Right Sock
20 stitches



- knit
- knit tbl
- purl
- repeat
- slip 1 to cable needle and hold to front, k1 from left needle, k1 tbl from cable needle
- slip 1 to cable needle and hold to back, k1 tbl from left needle, k1 from cable needle

- slip 1 to cable needle and hold to front, k1 tbl from left needle, k1 tbl from cable needle
- slip 1 to cable needle and hold to back, k1 tbl from left needle, k1 tbl from cable needle

- slip 1 to cable needle and hold to front, p1 from left needle, k1 tbl from cable needle
- slip 1 to cable needle and hold to back, k1 tbl from left needle, p1 from cable needle